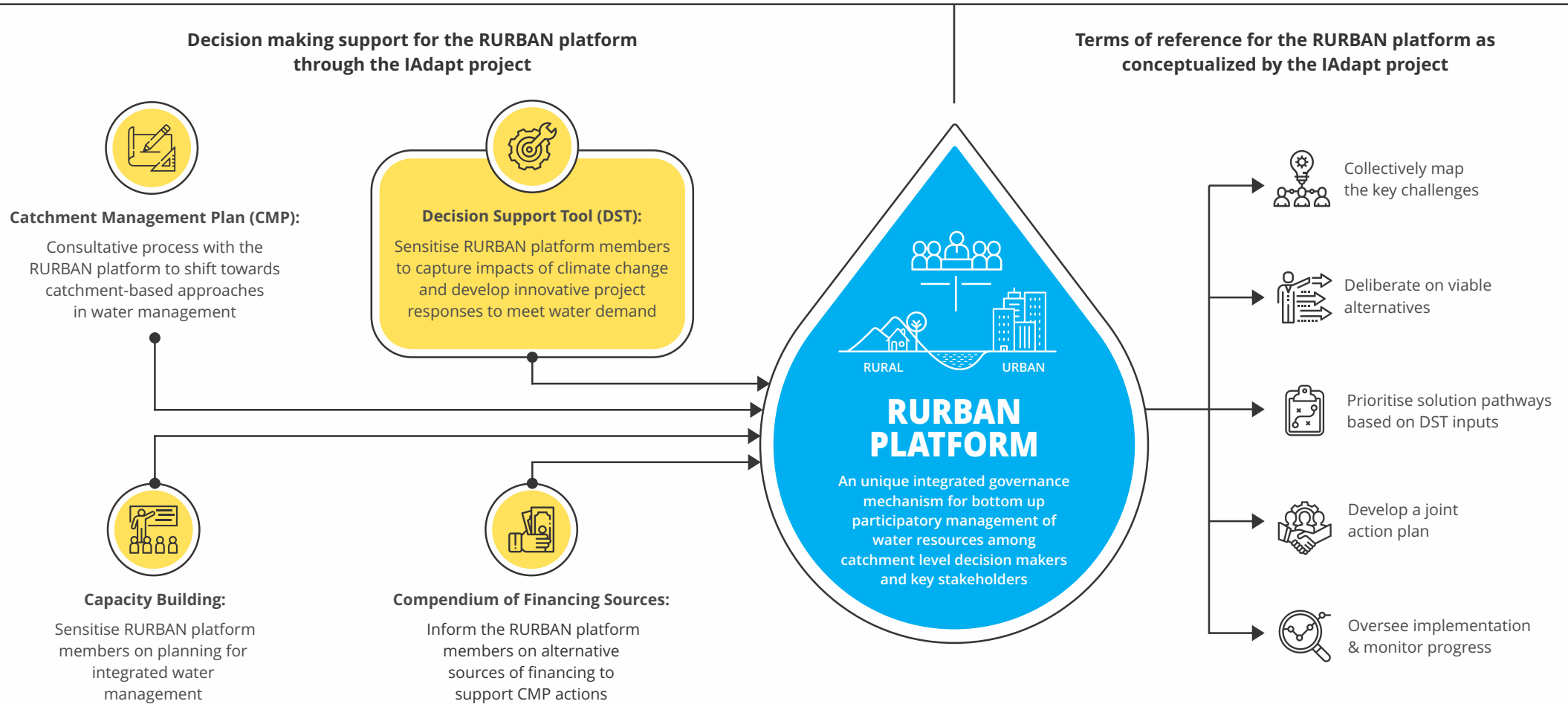


# Decision Support Tool (DST) for integrated water management

## Integrated Rural Urban Water Management for climate-based adaptations (IAadapt) project

Water resources transcend across institutional jurisdictions necessitating cross-sectoral partnerships across the rural and urban stakeholders. The **IAadapt project** aims to build an enabling ecosystem to empower the two project cities - Solapur, Maharashtra and Vijayawada, Andhra Pradesh and their catchments to transition to an integrated approach of water management using the following enablers,



# Decision Support Tool (DST) for the RURBAN platform in IAdapt

The decision support tool will serve as a review tool for proposed investments in water management. It will aid decision makers in introducing adaptations/augmentations in the proposed investments to promote equitable outcomes on allocation and use of water resource among all catchment stakeholders.

## DST Architecture

### MODULE 1: Assessment of water balance at a catchment level

The tool provides a forward-looking framework, that takes into account climate change / new investment scenarios, to estimate the water balance across user groups.

### MODULE 2: Develop and prioritise among solution pathways

Recommend potential solutions and best practices for each stakeholder group and assist in prioritisation based on financial and risk assessments and stakeholder inputs from the RURBAN platform.

